



## TCS385 TRAWL SONAR

### Profiler / Downsounder

Versatility means increased catch

Profile the net opening with the compact lightweight WESMAR trawl sleds. The TCS385 has the same features as the TCS785 with the exception of forward scanning.

#### TCS385-500: EXTREME DETAIL

TCS385-500 is ideal for differentiating between species of rock fish and for finding cod and flat fish. Thanks to the extremely detailed discrimination near the bottom, the 500 allows captains to see more dispersed fish and low target strength fish coming into the net. Captains say they can even differentiate between fish species. (Profiler and Downsounder both operate at 500 kHz).

#### TCS385-300: GREATER DISTANCE

The TCS385-300 trawl sled is ideal for watching larger trawl nets to ensure fish are not escaping. Popular for groundfish and mid-water trawl nets. (Profiler/Split Screen operates at 300 kHz; Downsounder 200 kHz).

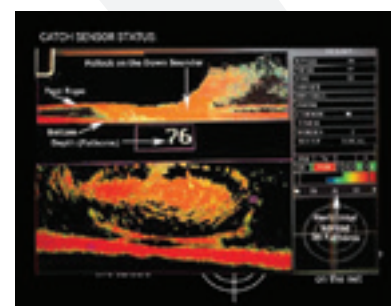
#### TCS385-180: PLENTY OF POWER

The TCS385-180 trawl sled has the power to paint the large nets and see the footrope and bottom in high resolution. Designed for the vessels pulling larger nets and the need to see at greater distance. The 180 kHz trawl is ideal when longer range is important. (Profiler/Split Screen operates at 180 kHz; Downsounder 110 kHz).

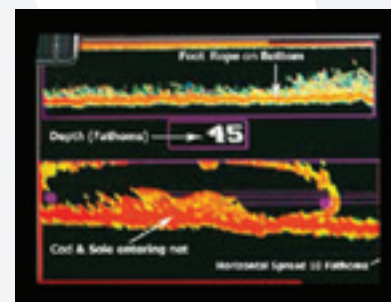
### Features:

- Pressure Sensor continuously monitors depth of headrope making it possible to align net and fish as they pass under the vessel.
- Depth Sounder shows highly detailed view of vertical net opening, footrope, and bottom.
- Data Output connects to compatible video sounders to view depth line/net position across the screen.
- Emits audible signal for triggered catch sensors and starts a timer clearly indicated on monitor.
- Easily obtain net opening dimensions using your cursor.
- Net Profile: View 360° degrees or smaller sectors. Keep watch as the footrope tends the bottom or net. Monitor fish as they enter, go over, or under the net. Watch the net change shape with adjustments and cross-current effects.
- Downsounder: A full screen downsounder helping ensure that no fish go undetected.

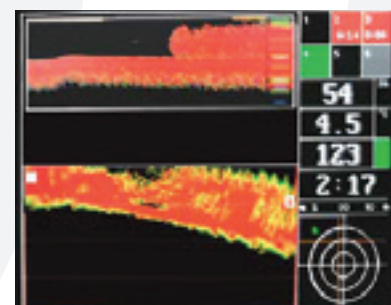
Features continued on back...



TCS385-300 in split screen showing pollock on the downsounder.



TCS385-300 in split screen showing cod and sole entering the net.



TCS385-500 in split screen showing cod and sole entering the net.

## "WHY WESMAR?" "WESMAR HELPS US CATCH FISH"

Bay Islander Fisheries out of Newport, Oregon, has long-used WESMAR equipment. This family-owned business is run by Kurt Cochran, who started fishing with his father at a very young age and by 18, was already a Captain.

We asked "Why WESMAR?" Cochran answered: "WESMAR helps us catch fish."

Cochran captains the 91-foot fishing Trawler F/V Marathon and uses WESMAR trawl systems for fishing Alaskan waters for cod, sole, rock fish and pollock.

WESMAR is "affordable, reliable and the service is phenomenal," said Cochran, who has a long history of studying and using electronics and nets. Each of his three boats is equipped with electronic equipment and with nets designed to meet the quotas and other challenges facing today's fishing companies. This knowledge and experience have positioned him as someone whose opinion has value to companies like WESMAR as well as to other fishermen.

"I'm happy with the WESMAR units...Personally like the high frequency system (WESMAR's TCS385-500 kHz.). With it we can identify dispersed and difficult-to-distinguish fish. We use it on the smaller Pelagic trawl nets at 25-27 fathoms on the net opening, and on all our non-pelagic trawls...and it works really well."

"We are able to see the different shapes and behaviors. This helps us determine what depth to run the net. We can see feed much better so we can drop the net to avoid getting the wrong species," said Cochran. He says he is adding WESMAR's portable lights on the excluders.



... features continued.

- Split Screen: Downsounder over net profiler. Two transducers operate simultaneously for a double view. Downsounder monitors the footrope and bottom, and marks fish in center. Profiler transducer scans the net opening in high resolution. Plus, you can make sure fish are not passing under the net by using the 'zoom-window' feature.
- Water temperature and depth: Sensors within the sled give you accurate information on these parameters at the headrope.
- Built rugged, yet lightweight: The TCS385 sled, when submerged, adds just 4.5 kg (10 lbs.) to the headrope.



TCS385-500 (Yellow)  
Ideal for fishing small bottom nets.  
A high-frequency profiler marks even small schools of fish.

TCS385-300 (Orange)  
Popular for cod nets and mid-water trawl nets.

TCS385-180 (Green)  
Ideal for Larger Nets.  
A 180 kHz profiler more appropriate for larger nets; pollock and hake.

## TCS385 TRAWL SONAR

MODEL	FREQUENCY (NET PROFILER)	FREQUENCY (DOWNSOUNDER)
TCS385-180	180KHz	110KHz
TCS385-300	300KHz	200KHz
TCS385-500	500KHz	500KHz

6108 188th Street N.E., Bldg. A100  
Arlington, WA 98223 USA  
Main: 425.481.2296  
Fax: 425.486.0909

**WESMAR**

Western Marine Electronics Company  
www.wesmar.com